

A woman with long brown hair is lying on her back on a white surface. She is wearing black eye protection. A handheld cryotherapy device is positioned above her face, emitting a fine mist of cold air. The device has a digital display on top showing '6', '30 Sec', and '7 cm'.

RheinLaser

# Revolution in Cryotherapy

*Beauty & Recovery Anytime, Anywhere*

- Pain Relief
- Anti-Inflammation & Detox
- Fat Reduction & Contouring
- Skin Rejuvenation & Tightening

# Product Highlights

Instant Cooling. Visible Results. Lasting Impact.

The CO<sub>2</sub> Portable Cryotherapy Device delivers high-pressure liquid carbon dioxide at -78°C, rapidly lowering skin temperature from 32°C to 4°C in just seconds.

This process induces neuro-cold stimulation, triggering the thermal shock effect, which activates the body's self-repair mechanisms for multiple benefits in beauty, contouring, and rehabilitation.



## Device Features

Smart Design. Maximum Efficiency.



-78°C ultra-cold cryotherapy technology



LED safety indicators with auto-protection system



Non-invasive, safe, and no downtime



Only 90 seconds required per treatment area



Multiple nozzle options for targeted applications



Lightweight handheld design, user-friendly operation

# Mechanism of Action

## Why Cold Creates Heat – The Thermal Shock Effect

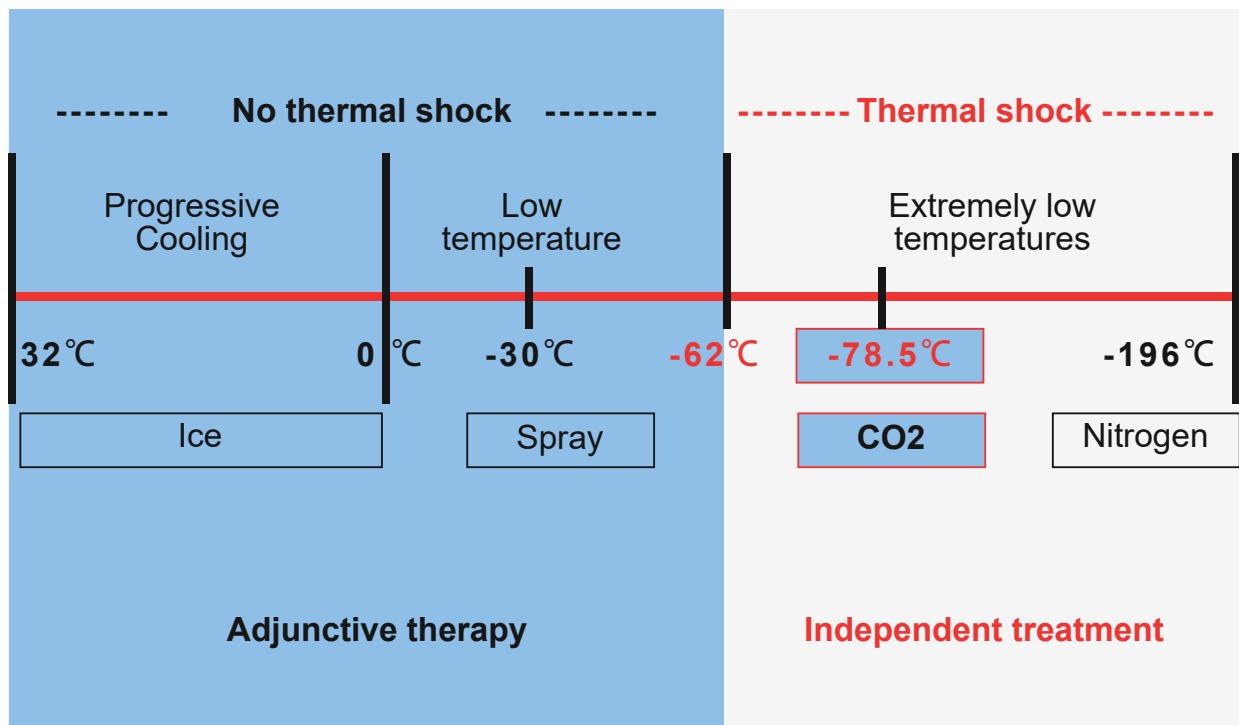
When exposed to sudden cold, the hypothalamus triggers a stress response:

Initial vasoconstriction followed by deep vasodilation

Accelerated blood flow and metabolism

Enhanced oxygen delivery and toxin clearance

This thermal shock effect helps remove inflammatory mediators, restore vascular permeability, and promote healing.



## Clinical Advantages

Efficient: visible results in minutes

Safe: intelligent temperature control & auto-protection system

Versatile: covers aesthetics, rehabilitation, and sports medicine

Portable: handheld design, easy to operate

Cost-effective: multi-purpose use reduces operational expenses



## Fat Reduction & Contouring

Target Fat, Sculpt Confidence – Cryolipolysis Effect

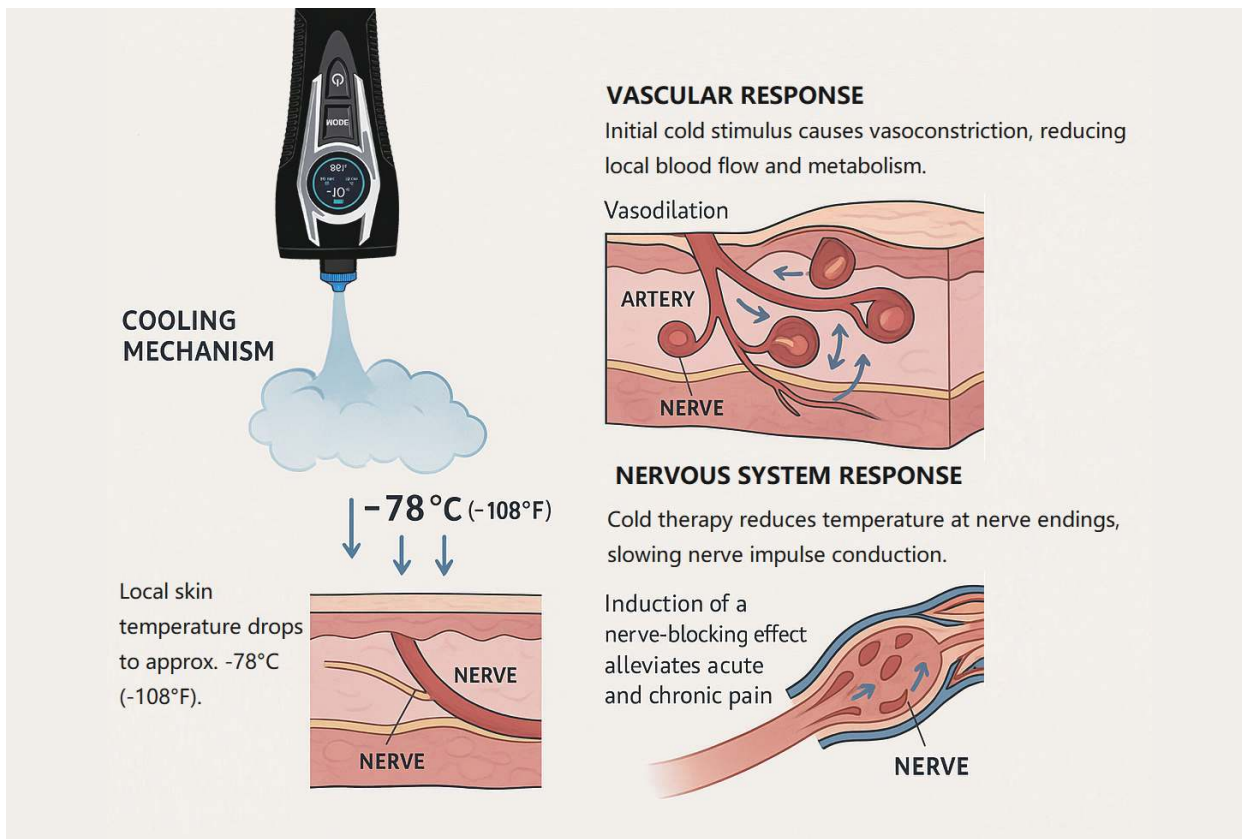
Fat cells crystallize under cold → apoptosis  
 Natural clearance via liver & lymphatic system  
 Permanent fat reduction (22–27%)



## Skin Rejuvenation & Tightening

Younger, Firmer, Brighter – Collagen Activation

Stimulates fibroblasts → collagen & elastin production  
 Replaces aging collagen, restoring density  
 Improves elasticity, brightness, and texture





## Pain Relief

Block Pain, Boost Comfort – Cryotherapy for Relief

- Inhibits nerve conduction → slows pain signals
- Activates “pain gate control” → blocks transmission
- Reduces muscle spasm & tension
- Promotes endorphin release → natural pain relief



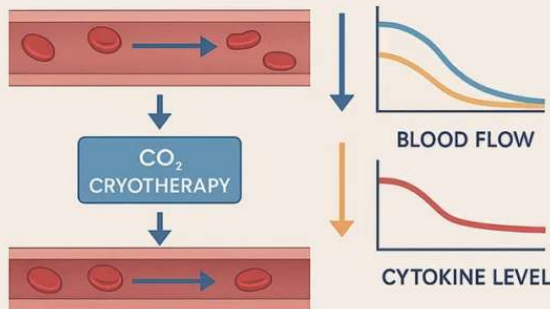
## Anti-Inflammation & Detox

Reduce Swelling, Remove Toxins, Restore Balance

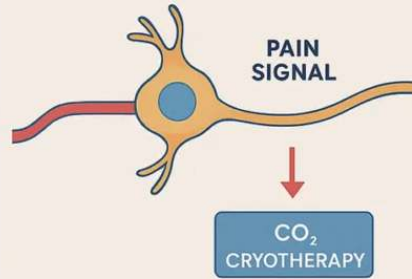
- Initial vasoconstriction reduces swelling & bleeding
- Reflex vasodilation accelerates removal of inflammatory mediators
- Restores vascular permeability
- Stimulates lymphatic drainage & detoxification

## MECHANISM OF CO<sub>2</sub> CRYOTHERAPY

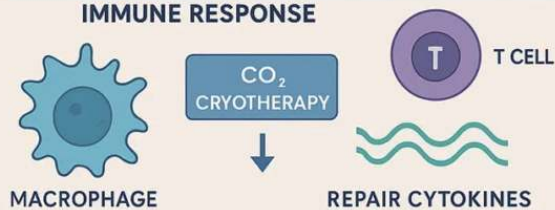
### VASOCONSTRICTION & CYTOKINE INHIBITION



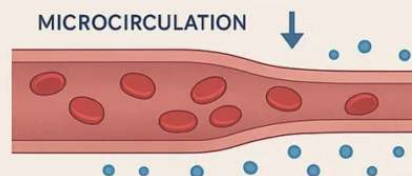
### NEUROMODULATION



### IMMUNE RESPONSE



### OXYGENATION



# Applications

From Beauty to Recovery – Wide Range of Benefits

## Aesthetic

Stimulates collagen regeneration → anti-aging & firming

Reduces puffiness & dark circles → refreshed look

Enhances skin elasticity & brightness

Precise cryolipolysis → localized fat reduction



## Facial Applications

Youthful Glow, Visible Renewal

Anti-wrinkle: reduces fine lines & tightens skin

Dark circle & puffiness reduction

Acne & inflammation control

Facial contouring: jawline & double chin sculpting



## Body Contouring

Sculpt the Body You Desire

Localized fat reduction: abdomen, thighs, arms, waistline

Cellulite improvement & smoother skin

Lymphatic drainage & detox

Targeted cryolipolysis: 22–27% fat layer reduction



## Skin Rejuvenation

Collagen Boost. Radiant Skin.

Fibroblast activation → new collagen & elastin production  
Improves skin density & elasticity  
Brightens dull complexion  
Repairs sun damage & restores youthful appearance



## Eye Care

Bright Eyes, Youthful Charm

Capillary constriction reduces puffiness  
Improves vascular & pigmented dark circles  
Smooths fine lines & crow's feet  
Promotes hydration & elasticity around eyes



## Scalp & Hair Care

Revitalize Scalp, Enhance Hair Vitality

Improves scalp circulation, nourishes follicles  
Regulates sebum, reduces dandruff  
Stimulates hair growth cycle, delays follicle aging

# Rehabilitation & Medical Sports Recovery

## Rehabilitation Medicine:

Acute injuries: sprains, strains, contusions

Chronic pain: arthritis, peri-arthritis, tendonitis

Post-surgery rehabilitation: reduces swelling & pain, accelerates healing

Supportive therapy: for neuromuscular conditions



## Sports Recovery:

Relief of delayed onset muscle soreness (DOMS)

Rapid cooling supports blood circulation recovery

Reduces post-training fatigue, enhances performance

Prevents sports injuries, shortens recovery time



# Nozzles for Every Need

One Device, Multiple Nozzles, Infinite Possibilities



## Cryotherapy Device Spray Nozzle:

Designed for cooling larger areas with diffuse spray, ideal for sensitive skin and delicate areas.



## Cryotherapy Device Round Dot Nozzle:

Used for lymphatic drainage, contouring, and skin tightening. Suitable for cooling and massaging areas like the forehead, neck, and chin.



## Cryotherapy Device Contact Nozzle:

Used for cooling and massaging small or sensitive areas, especially around the face and eyes.



## Cryotherapy Device Flat Nozzle:

Ideal for lymphatic drainage, contouring, and skin tightening. Suitable for cooling and massaging areas such as the forehead, neck, and chin.



## Black Nozzle Head:

Used for pain relief and injury recovery, especially on areas with larger muscle mass.



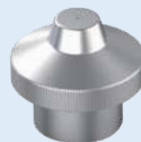
## Red Nozzle Head:

Used for medium to small areas such as joints, feet, and neck.



## Blue Nozzle Head:

Used for medium to small areas such as joints, feet, and neck.



## Silver Nozzle Head:

Ideal for larger or harder-to-reach areas such as thighs, upper arms, abdomen, and chest.



## Gold Nozzle Head:

Perfect for smaller or sensitive areas like the neck, hands, and face.

## Safety Design

- ✓ LED lights indicate treatment distance and temperature status
- ✓ Automatic shut-off when skin temperature falls below 2°C to prevent frostbite
- ✓ Over-temperature alarm with auto shutdown
- ✓ Multiple protection systems ensure user safety



## Target Users



Aesthetic Clients: for tightening, anti-aging, and localized fat reduction



Rehabilitation Patients: arthritis, post-surgery recovery, chronic pain



Athletes: rapid recovery, muscle soreness relief



Wellness Users: poor circulation, detox, and immunity boost



## Treatment Recommendations

Facial Care	1-3 min/session, 1-2 times per week, 4-8 sessions	
Body Contouring	90s per area, 1-2 times per week, 3-6 sessions	
Eye Care	1 min/session, 1-2 times per week, continuous maintenance	
Pain Management	Acute	1-2 min daily until relief
	Chronic	1-3 min per session, 2-3 times per week, for 4-6 weeks



Rhein Laser Technologies Co., Ltd.

---

Legal Headquarters:

E2 Building, 8th Floor, 801 Future City, No. 999 High-Tech  
Avenue East Lake High-Tech Development Zone Wuhan  
430206, China (Free Trade Zone Wuhan Area)

TEL: 86+27-88189920

Email: [sales@rheinlaser.com](mailto:sales@rheinlaser.com)

Web: [www.localcryotherapy.com](http://www.localcryotherapy.com)